

Figures

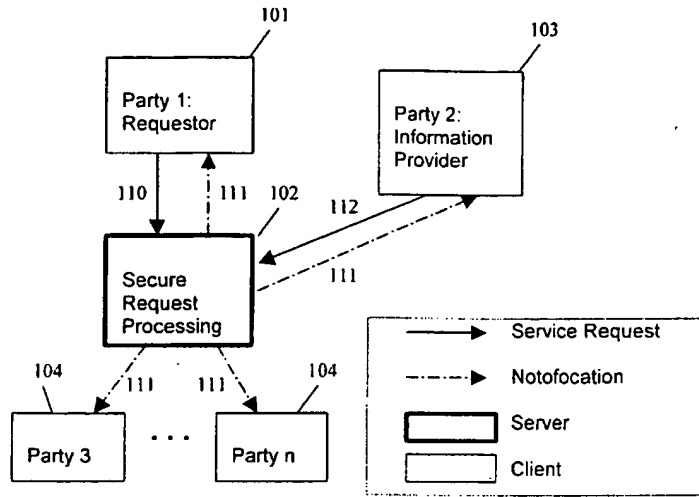


Fig. 1

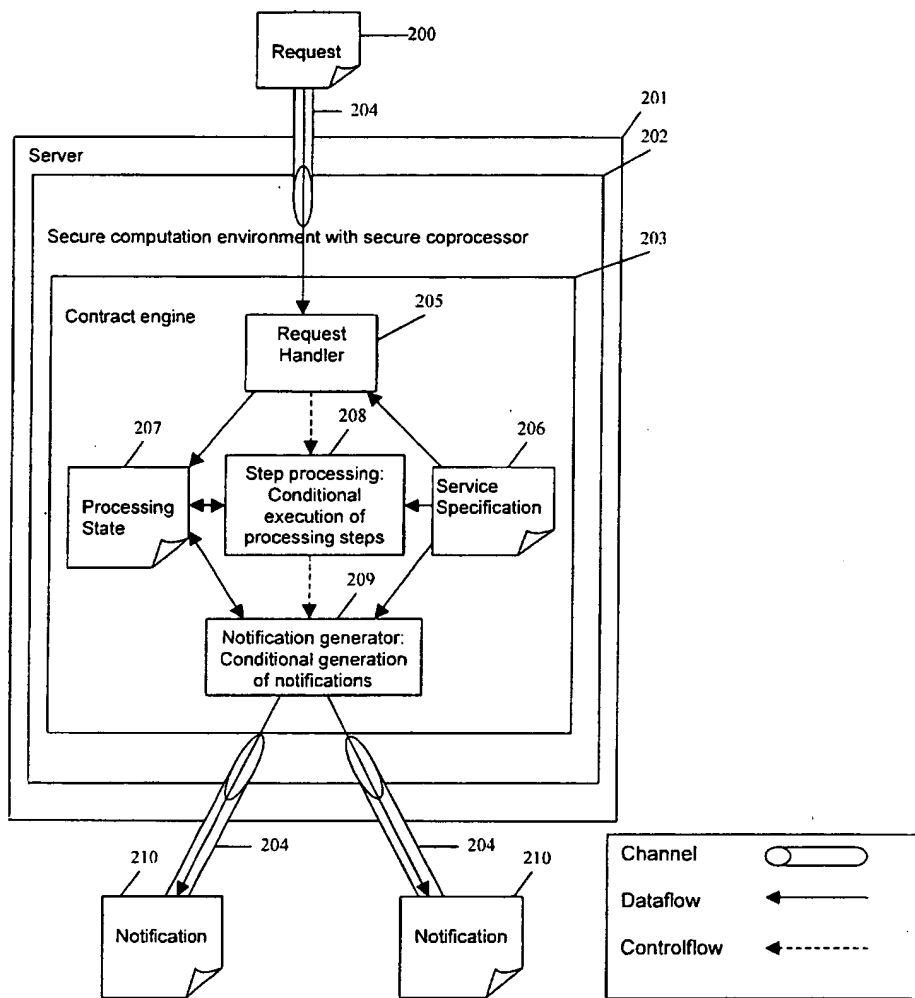


Fig. 2

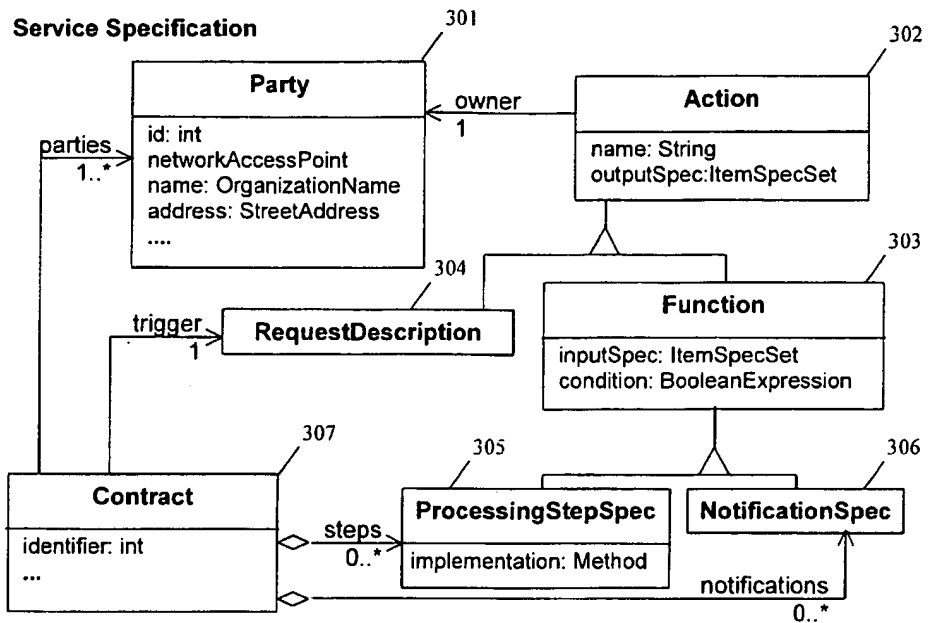


Fig. 3A

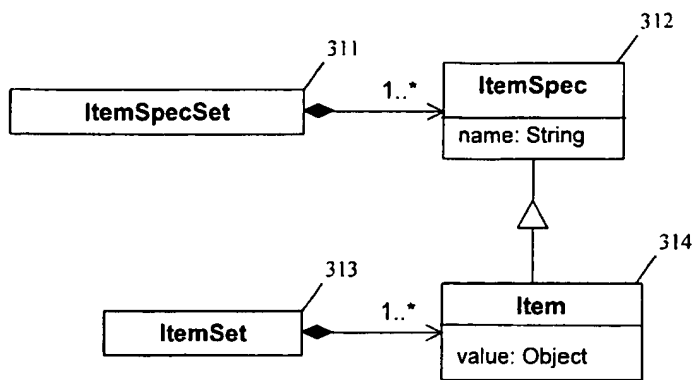


Fig. 3B

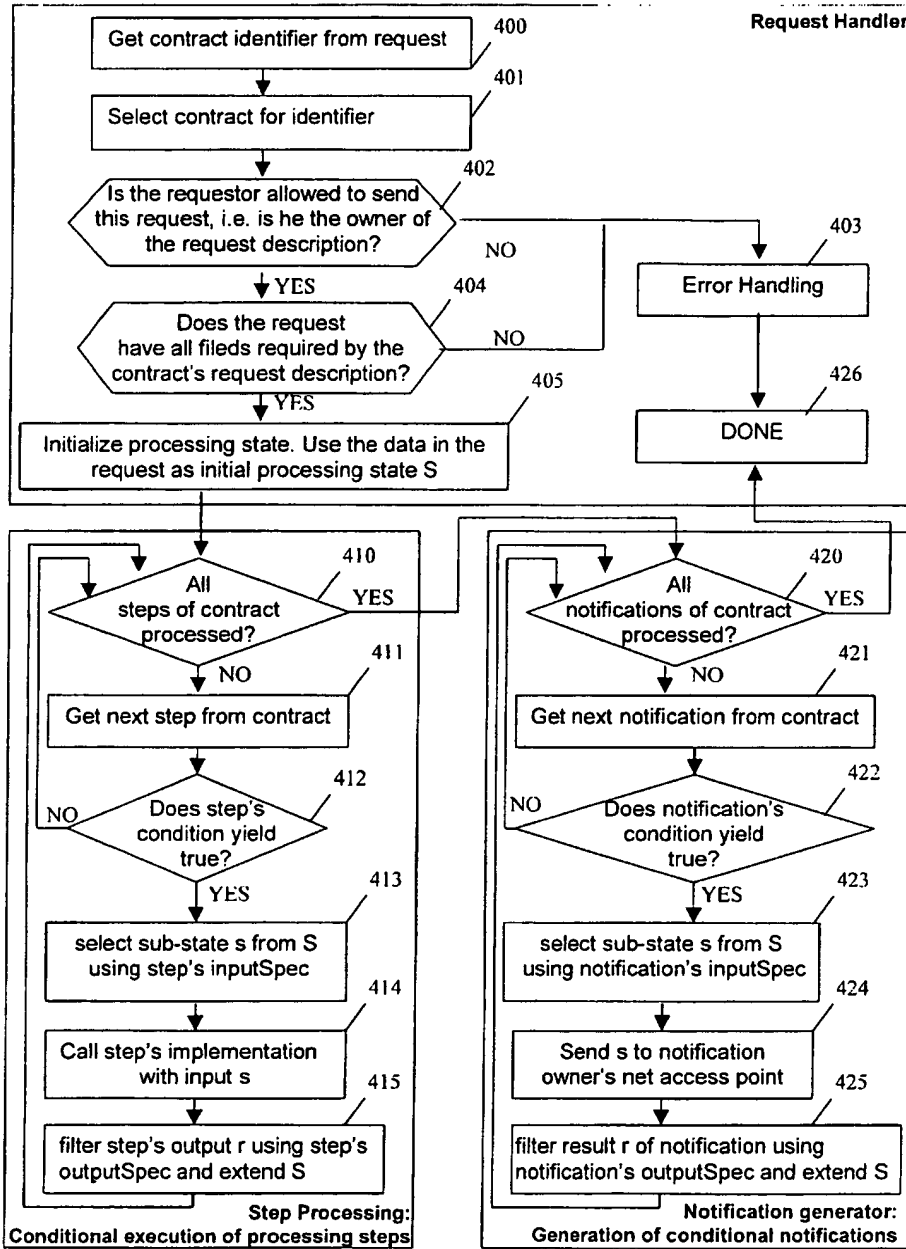


Fig. 4A

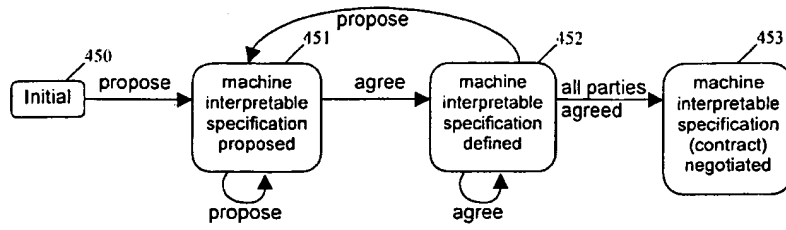


Fig. 4B

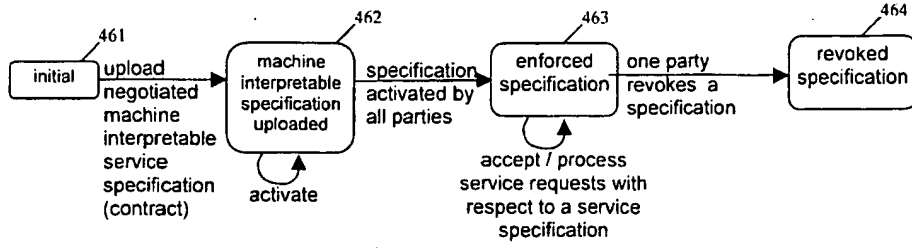


Fig. 4C

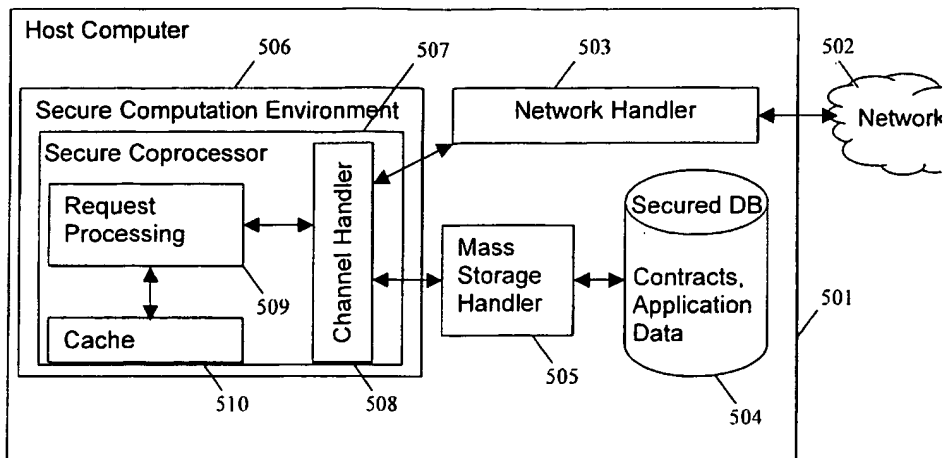


Fig. 5

601	Contract ID: 4711B5		602						
	Parties:		603						
	A:	ABC Airport							
	B:	QRS Agency							
	C:	XYZ Law Enforcement							
	Action / Owner / Condition	Item	I:n Matching	Biometric Matching	Decoy Generation	Response1	Response2	Response3	Response4
605	Request / A	Contract Id	/	/	+	/	/	/	/
		First Name	/	/	/	/	/	/	/
		Last Name	+	/	/	+	+	/	/
		Date of Birth	+	/	/	+	+	/	/
		Act. Finger Print	/	/	/	/	/	/	/
606		Location	/	/	/	-	+	/	/
	Transaction No.	/	/	/	/	/	/	+	
	I:n Matching against Watch List XYZ / B / True	Matched	/	/	/	/	/	/	/
608		First Name	/	/	+	+	/	/	/
		Last Name	/	/	+	+	/	/	/
		Date of Birth	/	/	+	+	/	/	/
		Suspect Class	/	/	/	/	/	/	/
611		Filed Finger Print	/	/	/	/	/	/	/
		Precious Convictions	/	/	/	/	/	/	/
		Reaction Advice	/	/	/	+	+	/	/
609	Biometric Match / C / Matched	Correlation	/	/	+	+	/	/	
610	Decoy Generation / B / NOT Matched	Decoy	/	/	/	/	+	/	
	Notification1 / C / Matched AND Suspect Class < 5	Return Code C					/	/	+
	Notification2 / C / Matched AND Suspect Class > 4	Return Code C					/	/	+
	Notification3 / C / NOT Matched	Return Code C							+
	Notification4 / A / True	Return Code A							

Legend: include data item (row) in action's (column) input specification,
 exclude data item from action's input specification,
 not applicable, since data item is not yet computed

Fig. 6

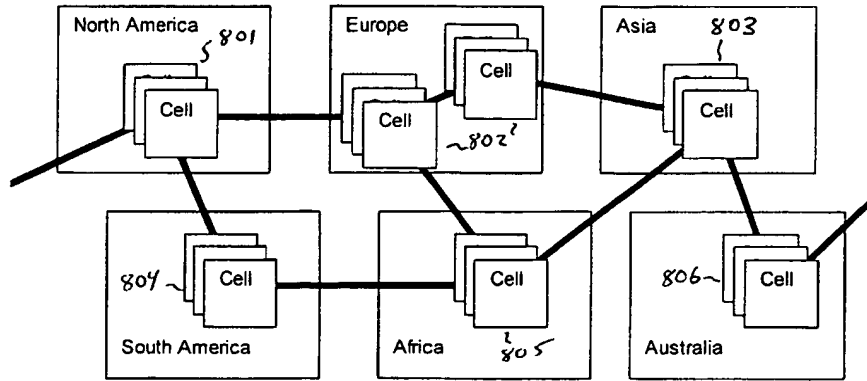


Fig. 7

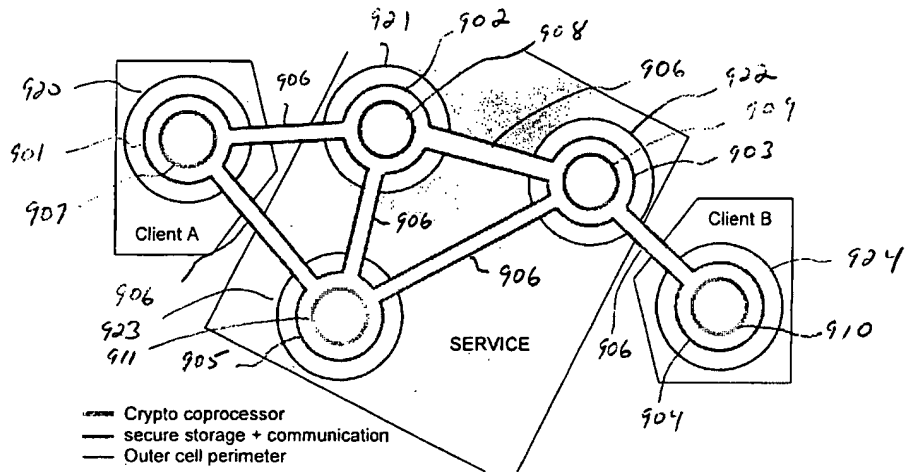


Fig. 8

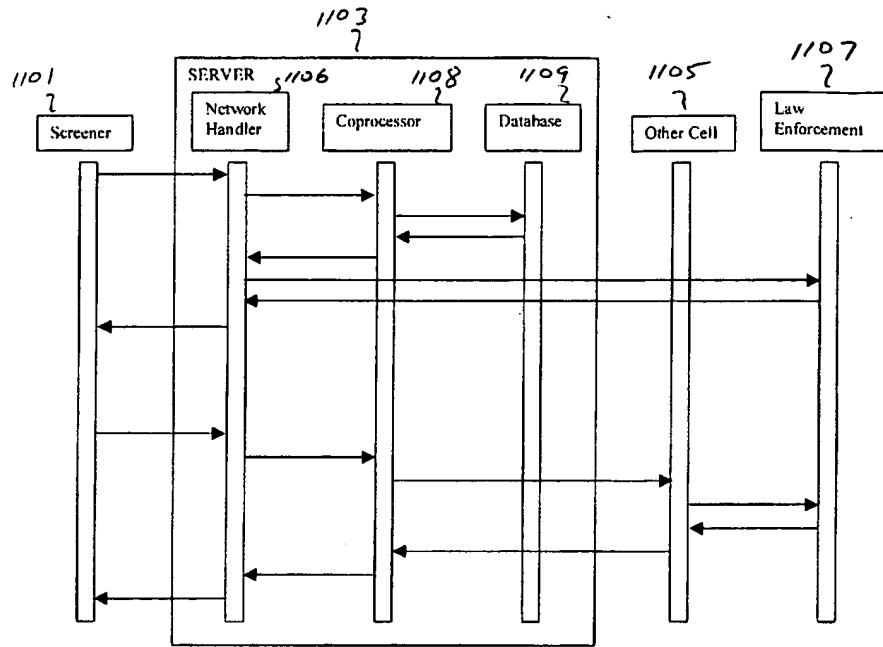


Fig. 9

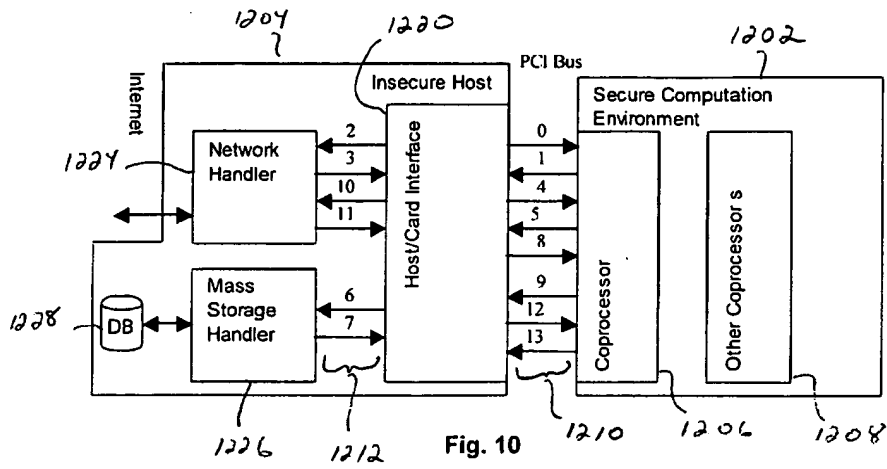


Fig. 10

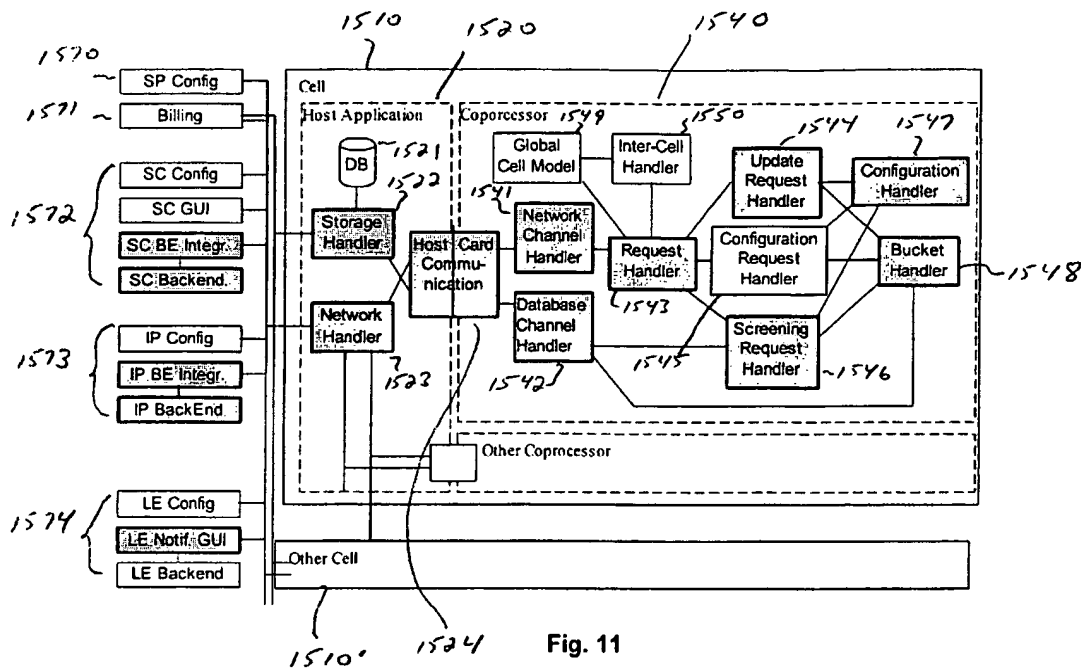


Fig. 11

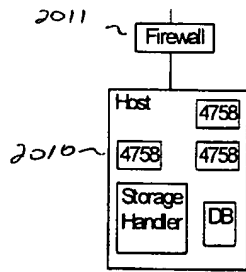


Fig. 12A

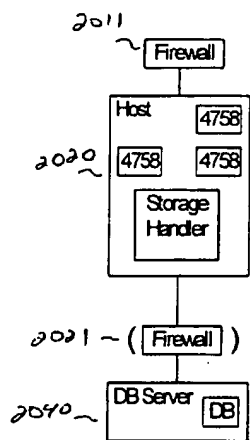


Fig 12B

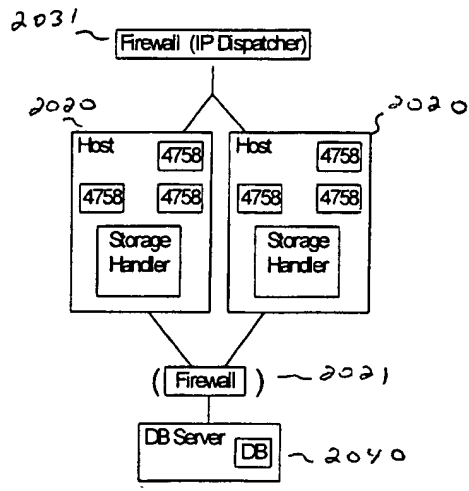


Fig. 12C